

CRIO Line CP 1 Door & 3 Drawer Refrigerated Counter, 265lt (-2/+10) - Remote

ITEM # _____
MODEL # _____
NAME # _____
SIS # _____
AIA # _____



712613 (AJ2RRAC)

1-door and 3x1/3-drawer
refrigerated counter, -2/+10°C,
full AISI 304, remote

Short Form Specification

Item No.

AISI 304 stainless steel panels, AISI 304 bottom panel, AISI 304 back panel. Worktop thickness 50mm. Full door and N. 3X1/3 drawers. For connection to a remote refrigeration unit (not included). Operating temperature: -2/+10°C. R134a gas in refrigeration circuit. Supplied with 1 grid for each door compartment

Main Features

- Large digital white-digit display with humidity selection button (3 preset level), internal temperature display and setting, manual activation of defrost cycle and turbo frost cycle (to rapidly cool warm loads).
- Equipped with Airflow system: forced air circulation system for rapid cooling and even temperature distribution within the cell.
- Tropicalized unit (43°C ambient temperature).
- 0mm clearance installation space: tower configuration cooling unit guarantee performance with frontal ventilation only; this unique solution allows installation against the wall or side by side with other appliances, even on the cooling unit side to maximize the use of kitchen space.
- Combination of doors and drawers to suit any configuration needed, with the possibility to change the configuration on site. Right cooling unit available on request.
- Fully compliant HACCP digital control: when temperature exceeds critical limits, acoustic and visual alarms are activated. Up to two months of event are kept in memory.
- Anti-tilt runners accept GN 1/1 containers.
- Self closing stainless steel doors (< 90°).
- Certified safety CE requirements.
- Prearranged to fit RS485 port to facilitate connection to a remote computer and integrated HACCP systems.
- Adjustable temperature range from -2 °C to +10 °C to suit meat, fish and dairy storage requirements.
- Mounted on stainless steel feet to give 150 mm (-5/+50 mm) clearance for ease of cleaning the floor.
- Connectivity ready for real time access to connected appliances from remote and data monitoring (requires optional accessory).
- Easy serviceability thanks to the intuitive control panel with remote access via app.
- Integrated RS485 port to facilitate connection to a remote computer and integrated HACCP systems.

Construction

- Fault code display.
- Interior base with rounded corners, pressed from a single sheet.
- Internal and external doors, front and side panels and removable worktop in AISI 304 Stainless steel.
- Worktop in AISI 304 Stainless steel with a 50 mm profile.
- Anti-drip profile on stainless steel worktop edge.
- If needed, working top can be removed for easier handling during installation (in case of narrow doors).
- Ease of cleaning and high hygiene standards thanks to the rounded internal corners, the easily removable runners, grids and air conveyors.
- Internal structure with 15 charging positions (3 cm pitch) available to host GN 1/1 grids, ensuring higher net capacity and a greater storage space.
- IP21 protection index.
- Remote refrigeration unit.
- Developed and produced in ISO 9001 and ISO 14001 certified factory.
- Internal dimension of the drawers:
- models with 2 1/2 drawers: 1st drawer (top drawer) 196x302x521 / 2nd drawer 198x302x521 (HxWxD)

APPROVAL: _____

- models with 3 1/3 drawers: 1st and 2nd drawers (top and central drawer) 99x302x521 / 3rd drawers 103x302x521 (HxWxD)
- models with 1/3+2/3 drawers: 1st drawer (top drawer) 99x302x521 / 2nd drawer 295x302x521 (HxWxD)

Sustainability

- CFC and HCFC free (ecological refrigerant type: R134a, - gas in foam: cyclopentane).
- Removable triple-chamber balloon magnetic gasket to improve insulation and reduce energy consumption and ease of cleaning.
- IQ Defrost - fully automatic defrost starts only when ice is actually building-up in the evaporator and adapts the defrosting duration to guarantee perfect ice removal while optimizing energy efficiency consumption.
- Fitted with 90 mm thickness of cyclopentane insulation for best insulating performance (thermal conductivity: 0,020 W/m*K) and lowest environmental impact (GWP=3).

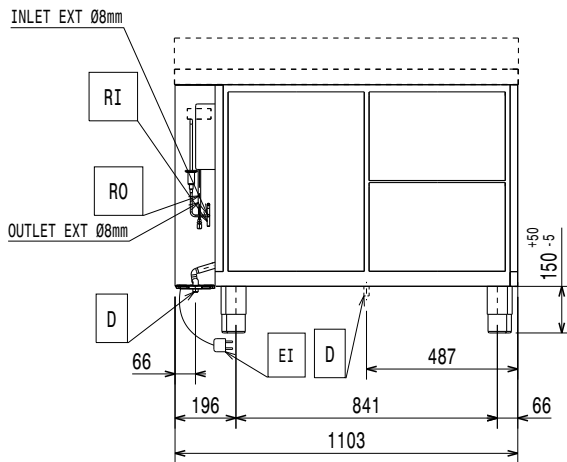
Included Accessories

- 1 of Kit 1/1GN gray rilsan grid and 2 side runners for refrigerated counters PNC 881109

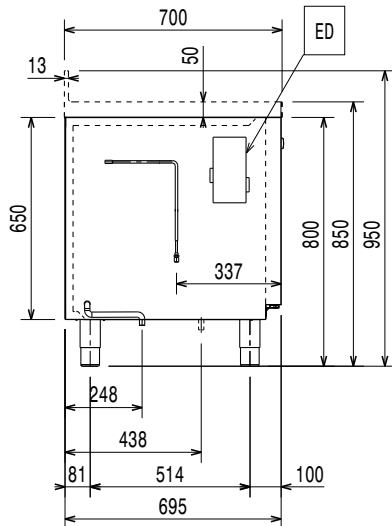
Optional Accessories

- Automatic defrost with waste evaporation PNC 880028 ☐
- Remote unit, -2/+10°C, for 670L refrigerated cabinets and counters (R134a) PNC 880231 ☐
- 1/1GN gray rilsan grid for refrigerated counters PNC 881107 ☐
- 2 side runners for 1/1GN refrigerated counters PNC 881108 ☐
- Kit 1/1GN gray rilsan grid and 2 side runners for refrigerated counters PNC 881109 ☐
- 1/1GN plastic container, h65mm PNC 881110 ☐
- 1/1GN plastic container, h100mm PNC 881111 ☐
- 1/1GN plastic container, h150mm PNC 881112 ☐
- Worktop for refrigerated Crio Line CP and SB counters, remote - 2 compartments PNC 881130 ☐
- Worktop and upstand for refrigerated Crio Line CP and SB counters, remote - 2 compartments PNC 881133 ☐
- 2-drawer kit refrigerated counters PNC 881179 ☐
- 3x1/3-drawer kit for refrigerated counters PNC 881186 ☐
- 1/3 and 2/3 bottle drawer kit for refrigerated counters PNC 881187 ☐
- Lock for refrigerator/freezer counters with 2 compartments - h650mm PNC 881245 ☐

Front

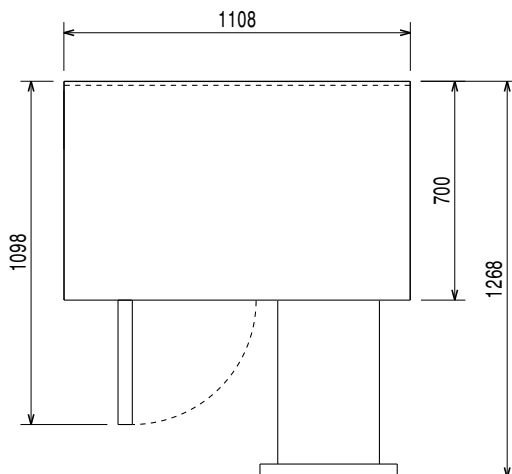


Side



EI = Electrical inlet (power)

Top



Electric

Supply voltage:

712613 (AJ2RRAC)

220-240 V/1 ph/50/60 Hz

Electrical power max.:

0.03 kW

Defrost Power:

0.22 kW

Plug type:

CE-SCHUKO

Key Information:

Gross capacity:

Door hinges:

External dimensions, Width: 1108 mm

External dimensions, Depth: 700 mm

External dimensions, Height: 850 mm

Internal Dimensions, Width: 798 mm

Internal Dimensions, Depth: 560 mm

Internal Dimensions, Height: 510 mm

Net weight: 85 kg

Shipping volume: 0.98 m³

Depth with doors open: 1110 mm

Height adjustment: 0/ mm

Refrigeration Data

Control type:

Operating temperature min.: -2 °C

Operating temperature max.: 10 °C

Refrigeration type: R134a;R513A;R426A

Operating mode:

Ventilated

Suggested refrigeration power:

Condition at evaporation
temperature:

Condition at condensation
temperature:

Condition at ambient
temperature:

Connection pipes (remote) -
outlet:

Connection pipes (remote) -
inlet:

Sustainability

Current consumption:

0.3 Amps

GWP Index: